

IMPORTANT INSTRUCTIONS

For Installation of fitting LS333ANI

Warning: The Luminaire should only be used complete with its protective shield (cover)

Note: To achieve IP68 rating, use round cable (size 5-10mm) to suit entry gland supplied with fixture.

Lumascap Lighting Industries Pty Ltd
38-44 Enterprise Street, Cleveland, QLD 4163, Australia
PO Box 1875, Cleveland D.C., QLD 4163, Australia
T 07 3286 2299
F 07 3286 6599
E sales@lumascap.com.au
W www.lumascap.com.au

WARNING

If cable is damaged replace with cable supplied by LUMASCAPE only.

DO NOT SHORTEN, INTERFERE OR DISCONNECT CABLE FROM FITTING. WARRANTY WILL BE VOID IF CABLE ASSEMBLY IS TAMPERED WITH.

CAUTION - HOT BULBS. Keep Away From Curtains And Other Combustible Material.

1 INSTALLATION - LS333ANI DRY NICHE

NICHE INSTALLATION (FIG 1)

- 1 If Dry Niche is to be set in concrete remove the fixture from the niche by removing the cover plate and then removing the two countersunk retaining screws. Remove the baffle plate and disconnect the transformer wiring from the terminal block. Store the fitting, baffle plate, seal and screws in a safe place.
- 2 Locate niche in site and position level. (Fixtures should not be installed within 3m (10 feet) of a pool, spa, or fountain.) If concreting make allowance for any finishing material above the concrete. Be sure to position and orient the fixture in a suitable location for connection to power supply.
- 3 If using armoured cable entry (LS333ANI-2), connect wires to power supply in accordance with the LS630 / LS640 / LS644 Connection Box instructions. If using standard cable entry (LS333ANI-1), connect wires in accordance with local electrical authority wiring rules.
- 4 If concreting fit fibreboard shield to opening of niche before concreting. Ensure that no concrete enters niche.

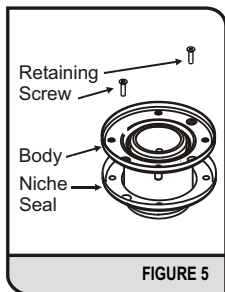


FIGURE 5

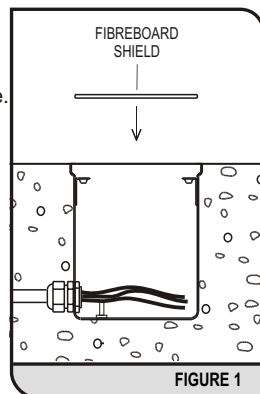


FIGURE 1

FITTING INSTALLATION - LS333ANI INTEGRAL TRANSFORMER MAINS SUPPLY (FIG 2)

Note: If niche has been set in concrete:

- Remove fibreboard shield by piercing with a screw driver and levering out.
- Thread the 12V leads through the hole in the baffle plate and connect to the terminal block in the fitting.
- Reconnect mains supply to gear tray.
- Position the gear in the niche. Ensure there is no sand or grit on fitting sealing area. Fit the seal to the body aligning holes in niche seal with pins and screw holes. Gently push body and seal into niche aligning countersunk screw holes with retaining lugs. Secure the body with the countersunk retaining screws supplied (fig 5).

- 1 Remove the lid from the fixture. Test the fixture for correct operation. Run for 5 minutes without lid to remove any moisture from fitting.
- 2 Ensure there is no sand or grit on fitting sealing area or retaining screw threads. Fit lid/seal assembly. Tighten retaining screws firmly to maintain maximum seal.

Note: Thermal protection device installed.

- Do not locate fitting near heat sources.
- Check fixture label for correct supply voltage

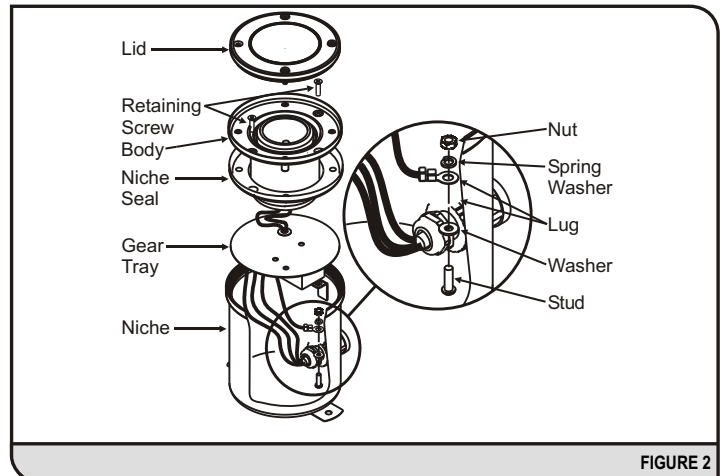


FIGURE 2

2 RELAMPING

- 1 Remove lamp gimbal from body of fitting. Gently pull on the lamp holder leads to remove heatshield/ lamp assembly from gimbal ring (fig 3).
- 2 Once removed, take the rim of the lamp between your thumb and forefinger. The slots provided in the heatshield allow for ease of grip. Pull to remove lamp.

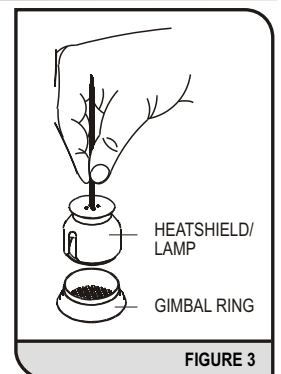


FIGURE 3

IMPORTANT

When Installing or re-lamping, the thermal cutout **MUST** be repositioned beneath the terminal block mounting bracket, within the LS333 fixture (refer fig 3). Failure to do this will cause the fixture to cycle.

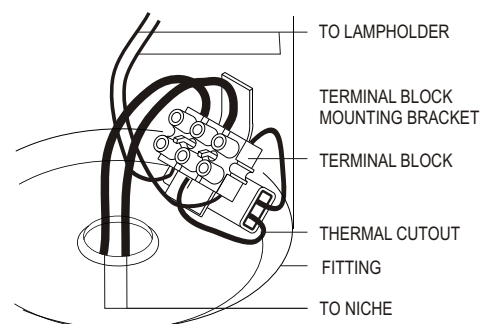


FIGURE 3

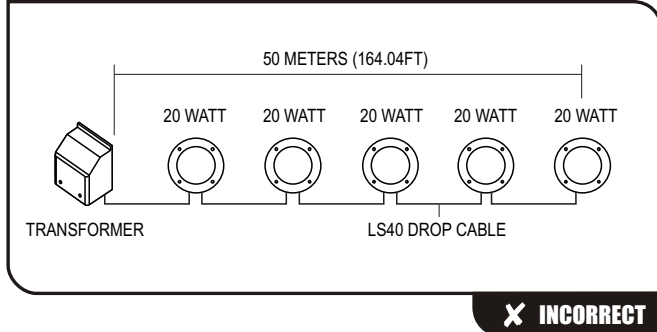
Cable runs should be kept as short as possible and should not exceed 100 Watts unless absolutely necessary.

It is important that the Voltage Drop (the amount of Voltage lost over a length of cable) is kept to a maximum 1 Volt (ie. the Voltage should not be less than 11 Volts at the fixture).

When using 6mm (2.36in) or 10mm (3.94in) trunk cable, the 3.3mm (0.13in) drop cable can be a maximum of 6m from main trunk line.

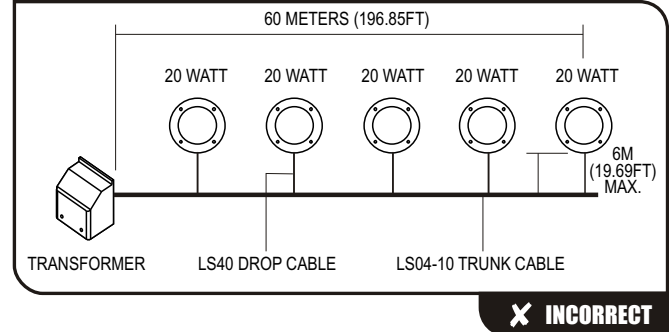
A larger cable will experience a lower voltage drop over the same length able (refer Voltage Chart below).

EXAMPLE 1 - USING DROP CABLE ONLY

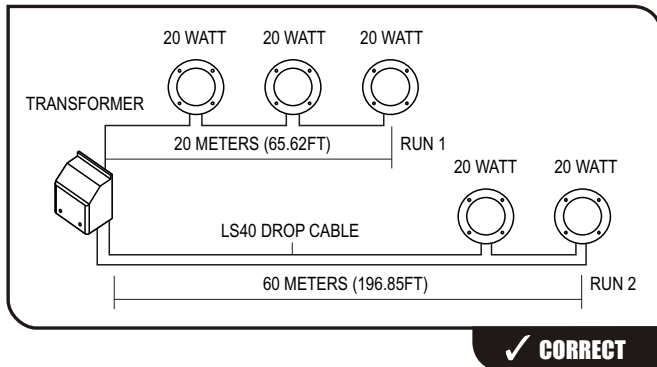


This example shows the incorrect way of installing a system using LS604 Drop Cable - The total load is 100 watts over 50 metres (164.04ft) which is much more than the 12 metres (39.37ft) which is allowed in the Drop chart below (refer to (1) in Voltage Drop Chart).

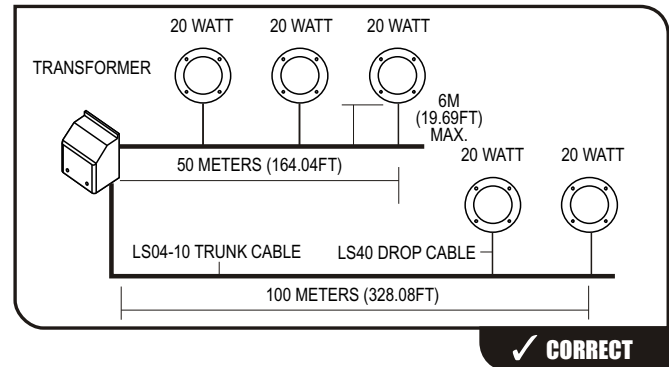
EXAMPLE 2 - USING TRUNK AND DROP CABLE



This example shows the incorrect way of installing a system using LS604-10 Trunk Cable - The total load is 100 watts over 60 metres (196.85ft) which is much more than the 36 metres (118.11ft) which is allowed in the Drop chart below (refer to (4) in Voltage Drop Chart).



This example shows the correct way of installing the system using LS604 Drop Cable - The total load on RUN1 is 60 watts over 20 metres (65.62FT) which is allowed in the Drop chart below (refer to (2)). The load on RUN2 is 40 watts and using a doubled cable allows the run to be 60 metres long (196.85ft) (refer to (3) in Voltage Drop Chart).



This example shows the correct way of installing the system using LS604-10 Trunk Cable - The total load on RUN1 is 60 watts over 50 metres (164.04ft) which is below the 54 metres (177.17ft) allowed in the Drop chart below (refer to (5) in Voltage Drop Chart). The load on RUN2 is 40 watts and using a doubled cable allows the run to be up to 168 metres (551.18ft) long (refer to (6) in Voltage Drop Chart).

VOLTAGE DROP CHART

LOAD	3.3MM (0.13IN) LS604 DROP CABLE		6MM (0.24IN) LS604-6 TRUNK CABLE		10MM (0.39IN) LS604-10 TRUNK CABLE	
	Single	Double	Single	Double	Single	Double
20W	70m (229.66ft)	140m (459.32ft)	105m (344.49ft)	210m (688.98ft)	140m (459.32ft)	280m (918.64ft)
40W	30m (98.43ft)	60m (196.85ft) (3)	55m (180.45ft)	110m (360.90ft)	84m (275.59ft)	168m (551.18ft) (6)
50W	25m (82.02ft)	50m (164.04ft)	44m (144.36ft)	88m (288.72ft)	62m (203.41ft)	124m (406.82ft)
60W	20m (65.62ft) (2)	40m (131.24ft)	36m (118.11ft)	72m (236.22ft)	54m (85.65ft) (5)	108m (171.30ft)
70W	15m (49.21ft)	30m (98.42ft)	30m (98.43ft)	60m (196.86ft)	50m (164.04ft)	100m (328.08ft)
80W	14m (45.93ft)	28m (91.86ft)	27m (88.58ft)	54m (177.16ft)	46m (105.92ft)	92m (211.84ft)
90W	13m (42.65ft)	26m (85.30ft)	24m (78.74ft)	48m (157.48ft)	42m (137.76ft)	84m (275.52ft)
100W	12m (39.37ft) (1)	24m (78.74ft)	21m (68.90ft)	41m (137.80ft)	36m (118.11ft) (4)	72m (236.22ft)
120W	10m (32.81ft)	20m (65.62ft)	18m (59.06ft)	36m (118.12ft)	30m (98.43ft)	60m (196.86ft)

CAUTION

The distances and wattages shown are maximum and should not be exceeded.

IMPORTANT SAFETY INSTRUCTIONS

INSTRUCTIONS PERTAINING TO A RISK OF FIRE, OR INJURY TO PERSONS

WARNING - To reduce the risk of FIRE or INJURY:

1. Turn Off and allow to cool before replacing lamp.
2. Lamp gets hot quickly! Contact only switch/plug when turning on.
3. Do not touch hot lens, guard, or enclosure.

SAVE THESE INSTRUCTIONS.

4. Keep lamp away from materials that may burn.
5. Do not touch the lamp at any time. Use a soft cloth. Oil from skin may damage lamp.
6. Do not operate the lighting fixture with a missing or damaged shield.